

FOR SALE

KILARNEY POINTE SITE

Land Available in Cary, NC at SW Cary Pwky & Old Apex Rd.



\$550,000/acre

**Two pads available
may be combined**

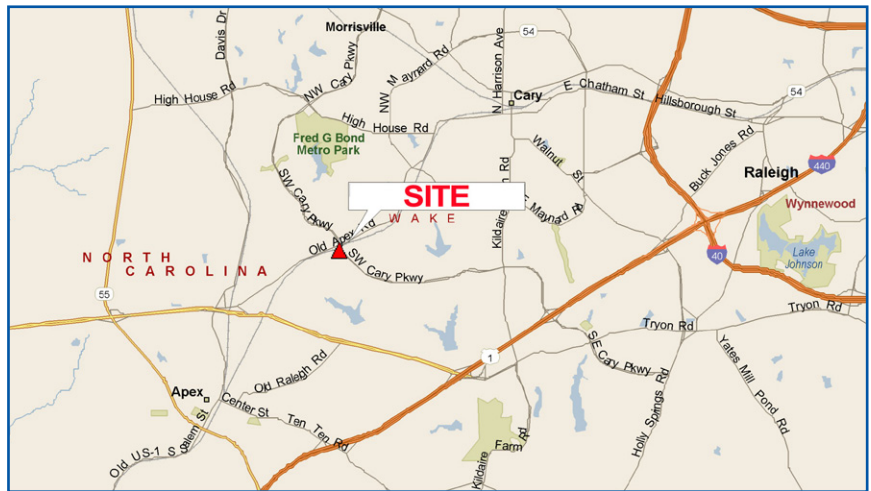
> 1.19 acres

> 1.10 acres

> Located in Cary, approx. 300 ft south of the intersection of Old Apex Road and SW Cary Parkway

> Zoned ORD-CU, (office, research, conditional use) allowing:

restaurant, office, convenience store / gas station, bank with drive-thru, day care, preschool, veterinary hospital, hotel, church, car wash, retail store, vehicle repair shop and more.



Marlene Spritzer, CCIM

marlene@spritzercommercial.com

5102 Durham Chapel Hill Blvd. Ste. 203
Durham, NC

P: 919/493.2726

F: 919/287.2248

www.spritzercommercial.com



All information herein was secured from sources we presumed to be reliable. However, we do not guarantee its accuracy, and all information is subject to verification.

OFFICE

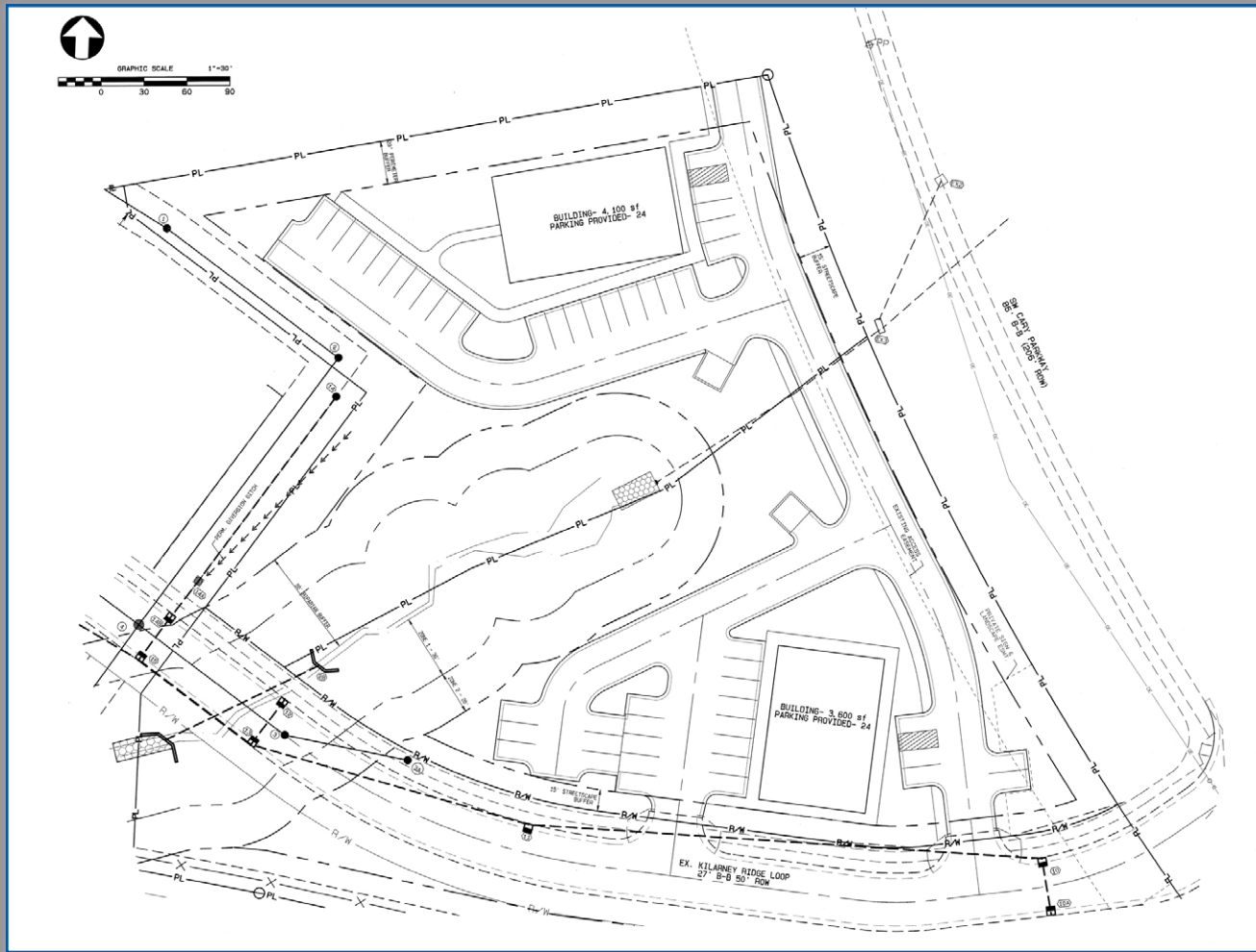
LAND

RETAIL

FOR SALE

KILARNEY POINTE SITE

Land Available in Cary, NC at SW Cary Pwky & Old Apex Rd.



Traffic counts

SW Cary Parkway: 24,000

Old Apex Rd.: 13,000

5-mile demographics

Residential Population: 172,907

Daytime Population: 82,319

Median Household Income: \$98,772



Marlene Spritzer, CCIM

marlene@spritzercommercial.com

5102 Durham Chapel Hill Blvd. Ste. 203
Durham, NC

P: 919/493.2726

F: 919/287.2248

www.spritzercommercial.com

All information herein was secured from sources we presumed to be reliable. However, we do not guarantee its accuracy, and all information is subject to verification.

OFFICE

LAND

RETAIL